



22 Lynwood Avenue, Egham, TW20 9RD

£5,000 Per Calendar Month

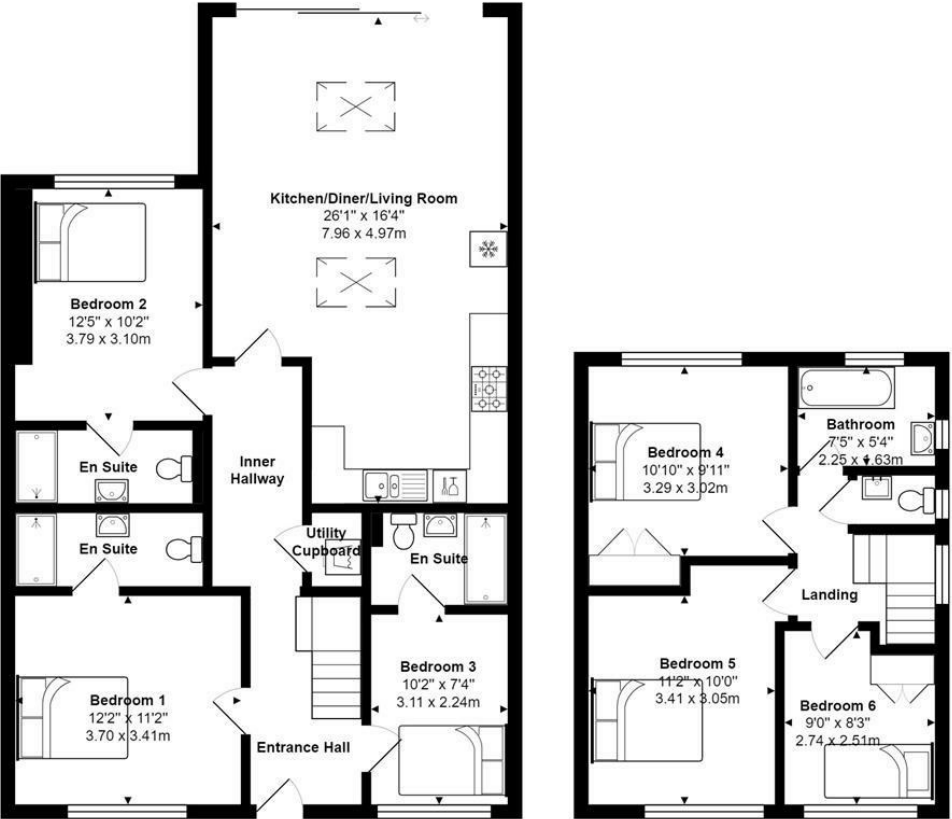


## 22 Lynwood Avenue, Egham, TW20 9RD

This will be the most amazing 6 bedroom 4 bathroom (3 en suite) student property, situated very close to the back gate of Royal Holloway University. It is just undergone an extensive extension/refurbishment programme and is available for a July 2026 start of term. Accommodation: entrance hall, huge fully fitted kitchen/breakfast/living room with roof lights and almost full-width doors onto the garden. There are three en suite bedrooms downstairs, whilst upstairs there's a further three bedrooms (2 big one small) and a further bathroom/separate w.c. The windows are all double glazed and gas central heating system to radiators, off road parking and good size garden, with gardener included. This will probably be the best 6 bedroom house in the market place and for a group ready to commit.



Floor Plan



Total Area: 1460 ft² ... 135.7 m²



Features

10 St Judes Road, Englefield Green, Surrey TW20 0BY  
Tel 01784 433696  
sales@aspenestateagents.co.uk



Tenure - Council Tax Band -



